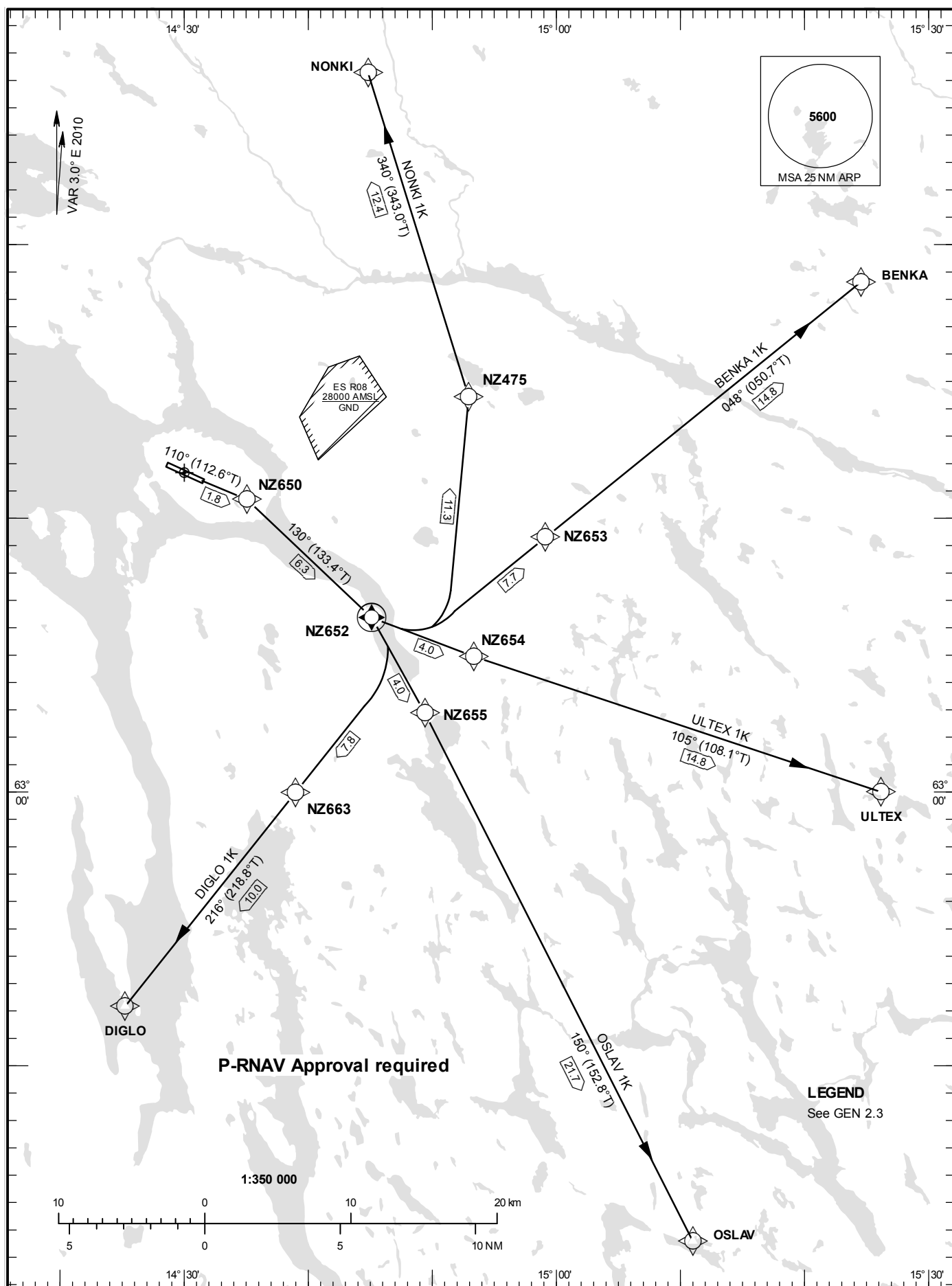


**STANDARD INSTRUMENT
DEPARTURE CHART (SID) -
ICAO**

HGT and ALT in ft
BRG are MAG (True)
TA 6000 ft AMSL

ÖSTERSUND TOWER 135.655

RNAV (GNSS) SID RWY 12



ÅRE ÖSTERSUND

Prescribed Coding of RNAV (GNSS) SID for RWY 12

REMARK

INITIAL CLIMB CLEARANCE: Climb to 6000 ft unless otherwise specified. Common to all RNAV SID.

P-RNAV Approval required.

MNM climb gradient required by ATC: Aircraft proceeding on SID shall use 6.6% (400 ft/NM) as a minimum gradient of climb up to 6000 ft MSL. Aircraft unable to conform to this procedure shall inform ATC accordingly.

RNAV SID	Path Descriptor	Waypoint Identifier	Fly-over	Course °M(°T)	Turn Direction	Altitude	Speed	VPA/ RDH	Rec Navaid	Navigation Specification
BENKA 1K (BENK1K)	CF	NZ650		110°					OSS	
	CF	NZ652	Y	130°					OSS	
	DF	NZ653								
	TF	BENKA								

SID instruction: Climb on track 110° to NZ650 – NZ652 – NZ653 – BENKA

RNAV SID	Path Descriptor	Waypoint Identifier	Fly-over	Course °M(°T)	Turn Direction	Altitude	Speed	VPA/ RDH	Rec Navaid	Navigation Specification
DIGLO 1K (DIGL1K)	CF	NZ650		110 °					OSS	
	CF	NZ652	Y	130°					OSS	
	DF	NZ663								
	TF	DIGLO								

SID instruction: Climb on track 110° to NZ650 – NZ652 – NZ663 – DIGLO

RNAV SID	Path Descriptor	Waypoint Identifier	Fly-over	Course °M(°T)	Turn Direction	Altitude	Speed	VPA/ RDH	Rec Navaid	Navigation Specification
NONKI 1K (NONK1K)	CF	NZ650		110°					OSS	
	CF	NZ652	Y	130°					OSS	
	DF	NZ475								
	TF	NONKI								

SID instruction: Climb on track 110° to NZ650 – NZ652 – NZ475 – NONKI

RNAV SID	Path Descriptor	Waypoint Identifier	Fly-over	Course °M(°T)	Turn Direction	Altitude	Speed	VPA/RDH	Rec Navaid	Navigation Specification
OSLAV 1K (OSLA1K)	CF	NZ650		110°					OSS	
	CF	NZ652	Y	130°					OSS	
	DF	NZ655								
	TF	OSLAV								

SID instruction: Climb on track 110° to NZ650 – NZ652 – NZ655 – OSLAV

RNAV SID	Path Descriptor	Waypoint Identifier	Fly-over	Course °M(°T)	Turn Direction	Altitude	Speed	VPA/RDH	Rec Navaid	Navigation Specification
ULTEX 1K (ULTE1K)	CF	NZ650		110°					OSS	
	CF	NZ652	Y	130°					OSS	
	DF	NZ654								
	TF	ULTEX								

SID instruction: Climb on track 110° to NZ650 – NZ652 – NZ654 – ULTEX